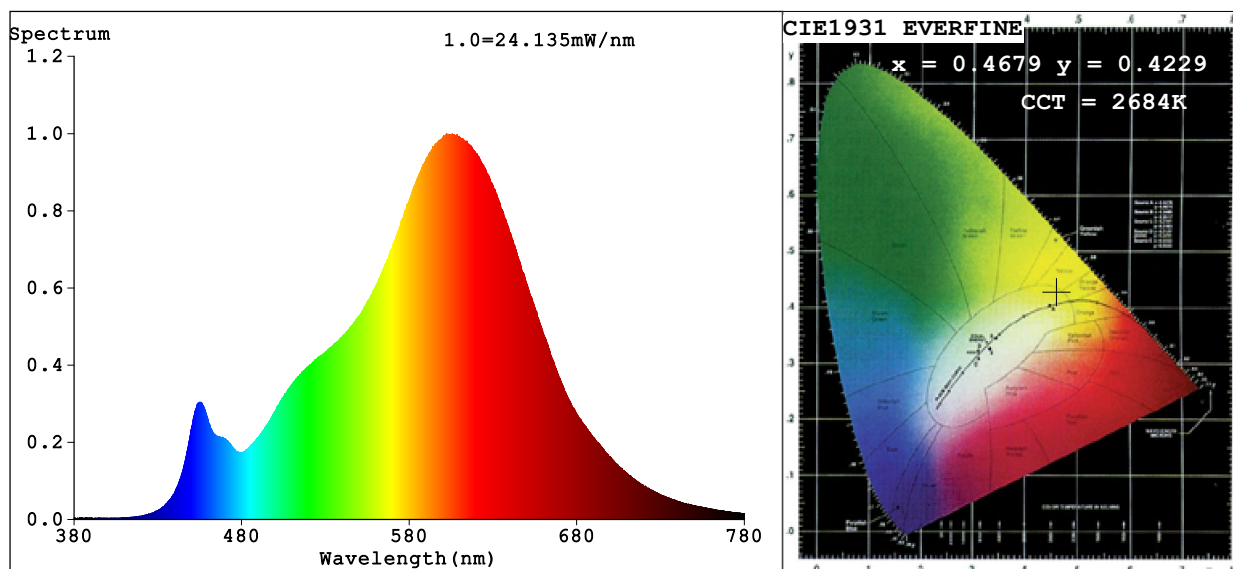


Spectrum Test Report



Color Parameters:

Chromaticity Coordinate: $x=0.4679$ $y=0.4229$ $u'=0.2622$ $v'=0.5331$
 CCT=2684K (Duv=0.0038) Dominant WL:Ld =583.1nm Purity=67.4%
 Ratio:R=25.0% G=72.8% B=2.2%; Peak WL:Lp=602.3nm FWHM=113.8nm
 Render Index:Ra=82.1 CRI=77.0 TM30:Rf=82 Rg=91
 R1 =80 R2 =92 R3 =95 R4 =79 R5 =81 R6 =92 R7 =82
 R8 =56 R9 =5 R10=82 R11=80 R12=74 R13=83 R14=98 R15=71

Photo Parameters:

Flux = 1099 lm Eff. : 78.92 lm/W Fe = 3.326 W Scotopic:1324 S/P:1.2051

Electrical parameters:

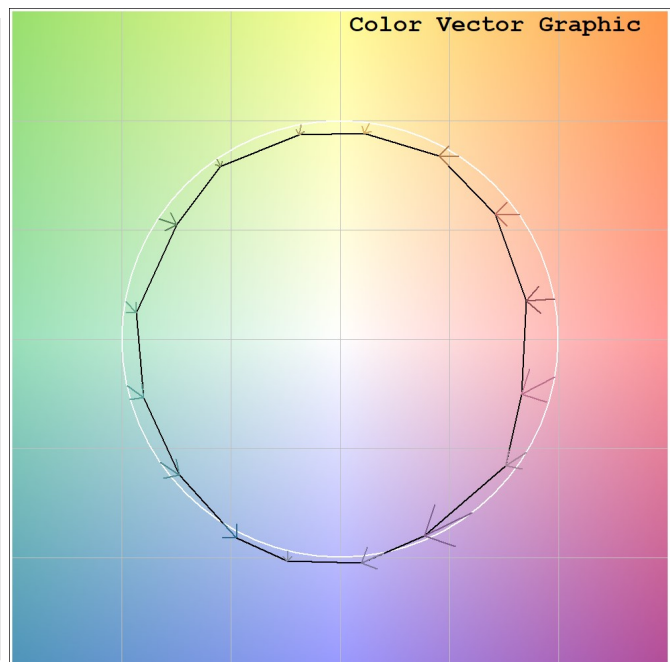
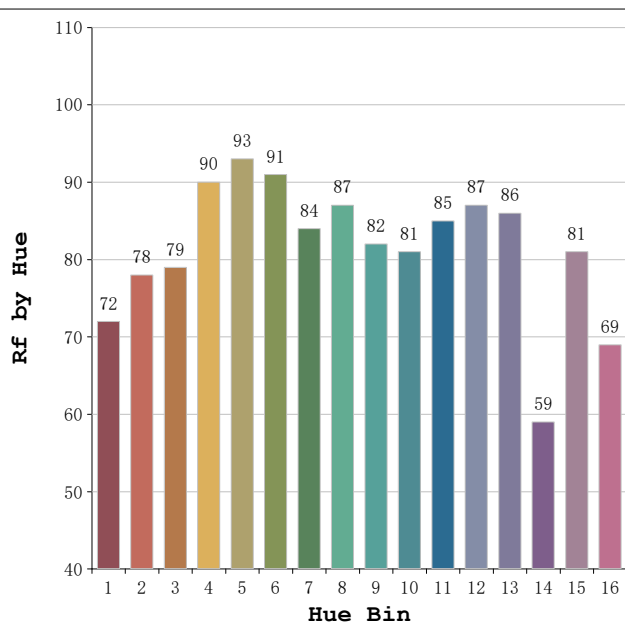
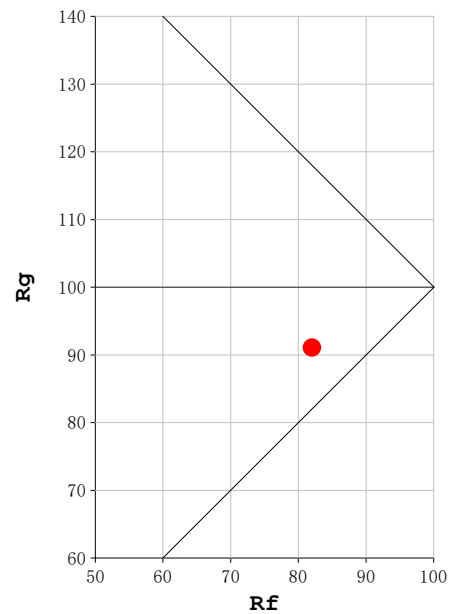
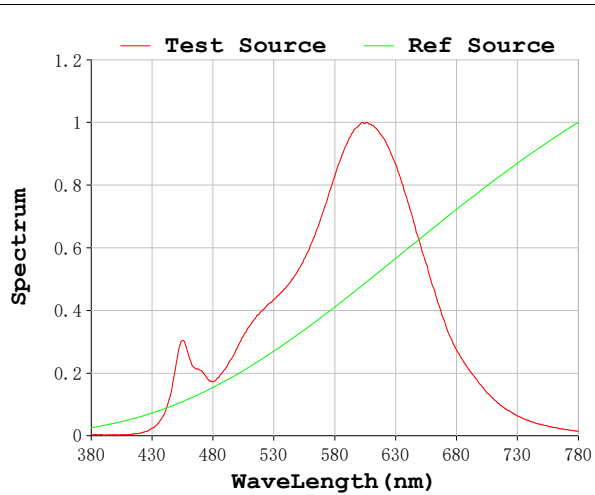
V = 230.09 V I = 0.06885 A P = 13.92 W PF = 0.8788

Status: Integral T = 1000 ms Ip = 48637 (74%)

Model:Ecoled Infinity COB 2700K
 Tester:Sergio Carneros
 Temperature:27Deg
 Manufacturer:Luz Negra S.L

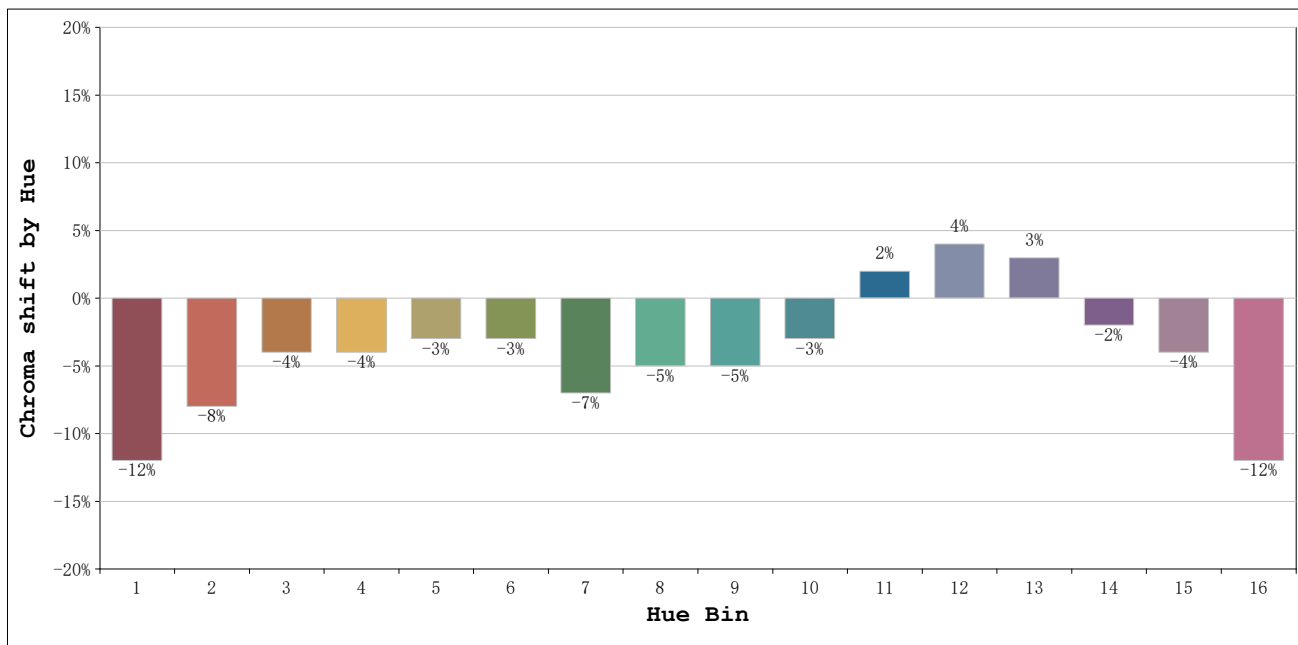
Number: 34.039
 Date:2023-11-15 09:11:19
 Humidity:40%
 Remarks:100cm de tira flexible

Rf: 82 **CCT: 2684 K** **u': 0.2622**
Rg: 91 **Duv: 0.0038** **v': 0.5331**



Model:Ecoled Infinity COB 2700K
 Tester:Sergio Carneros
 Temperature:27Deg
 Manufacturer:Luz Negra S.L

Number: 34.039
 Date:2023-11-15 09:11:19
 Humidity:40%
 Remarks:100cm de tira flexible



			Graphic shift(%)	
Hue Bin	Hue Angle	Rf	Chroma	Hue
1	0.0° - 22.5°	72	-12	2
2	22.5° - 45.0°	78	-8	6
3	45.0° - 67.5°	79	-4	8
4	67.5° - 90.0°	90	-4	1
5	90.0° - 112.5°	93	-3	2
6	112.5° - 135.0°	91	-3	0
7	135.0° - 157.5°	84	-7	-1
8	157.5° - 180.0°	87	-5	4
9	180.0° - 202.5°	82	-5	7
10	202.5° - 225.0°	81	-3	10
11	225.0° - 247.5°	85	2	9
12	247.5° - 270.0°	87	4	1
13	270.0° - 292.5°	86	3	-10
14	292.5° - 315.0°	59	-2	-23
15	315.0° - 337.5°	81	-4	-9
16	337.5° - 360.0°	69	-12	-10

Model:Ecoled Infinity COB 2700K
 Tester:Sergio Carneros
 Temperature:27Deg
 Manufacturer:Luz Negra S.L

Number: 34.039
 Date:2023-11-15 09:11:19
 Humidity:40%
 Remarks:100cm de tira flexible